

MIMOSA Pro for Wound Care

Looking for a way to:

- Quantify your wound care assessments?
- Determine the efficacy of your treatment modalities?
- Document your debridement and wound bed prep for skin substitutes?
- Protect reimbursement payments?
- Increase patient compliance with care plan?



Learn more



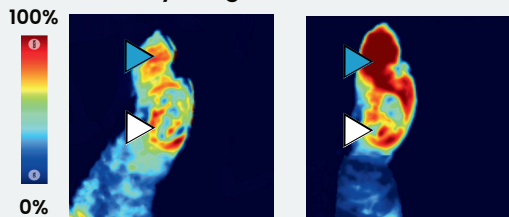
Understanding the MIMOSA Pro Value

The MIMOSA Pro supports streamlined real-time tissue health assessments at the point-of-care by capturing three images (tissue oxygenation, thermal, and digital images) in less than one second. The images captured are uploaded to a HIPAA-compliant web portal where clinicians can track patient progress over time and document treatment efficacy.

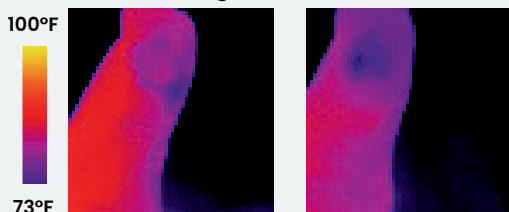
Digital Image



Oximetry Image



Thermal Image



Pre

Post

▶ 40% increase in StO₂

▷ 33% increase in StO₂



Monitor Wound Progression

Determine efficacy of treatment modalities by monitoring tissue oxygenation and temperature over time.



Real-Time Insights

Gain real-time point-of-care insights and access a second opinion while in the field to inform decisions about next steps in care.



Increase Patient Buy-In

Increase patient compliance with real-time visualization demonstrating the effectiveness of your treatment modalities.



Protect Reimbursement Payments

Access ready-to-export documentation that illustrates the medical necessity of your chosen treatment modalities.

Reimbursement Codes Associated with the MIMOSA Pro

CPT Code ¹	Descriptor	OPPS SI ²	OPPS Medicare Payment ³	OPPS APC ²	Provider Payment
0640T	Non-contact near-infrared spectroscopy (eg, for measurement of deoxyhemoglobin, oxyhemoglobin, and ratio of tissue oxygenation), other than for screening for peripheral arterial disease, image acquisition, interpretation, and report; first anatomic site	T	5732	\$38.21	Evaluated case-by-case
0859T	Non-contact near-infrared spectroscopy (eg, for measurement of deoxyhemoglobin, oxyhemoglobin, and ratio of tissue oxygenation), other than for screening for peripheral arterial disease, image acquisition, interpretation, and report; each additional anatomic site (<i>List separately in addition to code for primary procedure</i>)	N	N/A	\$0	Evaluated case-by-case

¹ Current Procedural Terminology (CPT®) is copyright 1966, 1970, 1973, 1977, 1981, 1983–2023 by the American Medical Association. All rights reserved. CPT is a registered trademark of the American Medical Association (AMA).

² Medicare Program: Hospital Outpatient Prospective Payment and Ambulatory Surgical Center Payment Systems 2024 Final Rule

³ CMS Hospital Outpatient PPS January_2024_OPSS_Addendum_B.12212023

MIMOSA Pro Key Features



US FDA 510 (K) CLEARED CLASS II MEDICAL DEVICE

3 IMAGES IN 1 CAPTURE

Capture tissue oximetry, temperature, and digital images in less than one second without requiring patient contact.

HIPAA-COMPLIANT WEB PORTAL

Gain real-time validation into efficacy of treatment modalities and proactively adapt care plans to improve patient outcomes.

ALL HEALTHCARE PROFESSIONALS

Pocket-sized lightweight technology that fits seamlessly into existing workflows and can be used by any healthcare professional in any health setting.

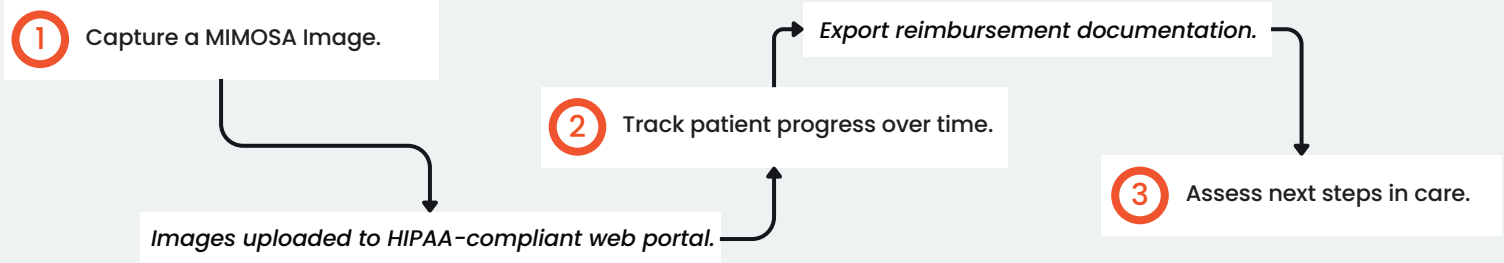
ACTIONABLE INSIGHTS

Improve patient outcomes with real-time point-of-care insights that help drive informed decisions about next steps in care.



MIMOSA Pro Clinical Workflow

The MIMOSA Pro integrates seamlessly into existing clinical workflows across the care continuum.



MIMOSA Pro Testimonial



"The MIMOSA Pro offers real-time validation, enabling me to gauge the positive impact of our treatment modalities. This insight empowers me to adapt patient care plans proactively, ultimately leading to improved patient outcomes."

Dr. Matthew Regulski

Medical Director - The Wound Institute of Ocean County